

V-19

Makin' Whoopee

VOCAL

Music by Walter Donaldson
Lyrics by Gus Kahn
arranged by Dave Wolpe

MODERATELY SLOW & BLUESY (♩ = 92)

(♩ = ♯♩)

A . NOTH . ER

(S)

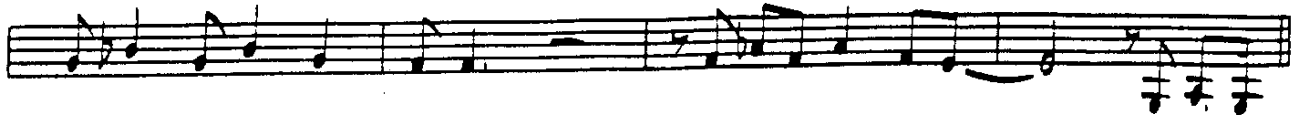
BRIDE, — A . NOTH . ER JUNE, — A . NOTH . ER SUN — NY HON . EY — MOON — A . NOTH . ER
YEAR, — OR MAY . BE LESS, — WHAT'S THIS I HEAR? — WELL CAN'T YOU GUESS? — SHE FEELS NE .

SEA . SON — A . NOTH . ER REA . SON, — FOR MAK . IN' WHOOP . EE!
GLECT . ED, — AND HE'S SUS . PECT . ED, — OF MAK . IN' WHOOP . EE!
A LOT OF
SHE SITS A .

SHOES, — A LOT OF RICE, — THE GROOM IS NERV . OUS, — HE AN . SWERS TWICE, — IT'S REAL . LY
LONE, — MOST EV . 'RY NIGHT, — HE DOES . NT PHONE HER, — HE DOES . NT WRITE, — HE SAYS HE'S

KILL . ING — THAT HE'S SO WILL . ING — TO MAKE WHOOP . EE!
"BU . SY" — BUT SHE SAYS "IS HE"? — HE'S MAK . IN' WHOOP . EE!

PIC . TURE A LIT . TLE LOVE NEST, — DOWN WHERE THE ROS . ES CLING —
HE DOES . NT MAKE MUCH MON . EY, — ON . LY FIVE THOU . SAND PER —



PIC-TURE THE SAME SWEET LOVE NEST,
SOME JUDGE WHO THINKS HE'S FUN-NY,

THINK WHAT A YEAR CAN BRING. — HE'S WASH-ING
SAYS "YOU'LL PAY SIX TO HER." — HE SAYS, "NOW



DISH-ES — AND BA-BY CLOTHES, — HE'S SO AM-BIT-IOUS — HE EV-EN SEWS. — BUT DON'T FOR-
JUDGE, SUP-POSE I FAIL" — THE JUDGE SAYS "BUDGE" RIGHT IN-TO JAIL. — YOU'D BET-TER

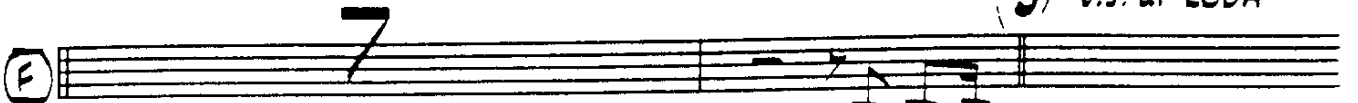
TO CODA



GET FOLKS, THAT'S WHAT YOU GET FOLKS, — FOR MAK-IN' WHOOP-EE!
KEEP HER, I THINK IT'S CHEAP-ER, — THAN MAK-IN'



 D.S. al CODA



A-NOTH-ER

CODA



WHOO-EE!

BUT DON'T FOR-



V-19

Makin' Whoopee

PIANO

Music by Walter Donaldson
Lyrics by Gus Kahn
arranged by Dave Wolpe

MODERATELY SLOW & BLUESY (♩ = 92)

BR. A

VOCAL CUE

f

CMA7 E mi7(b9)/A7 Dmi7 Dmi7(MA7) Dmi7 G7 Dmi7 E mi7 Eb9 AbMA7 G+7

f SXS.

A

mf

(SOLO)

CMA7 A7(b9) A7 Dmi7 Dmi7(MA7) Dmi7 G7 CMA7 C7 FMA9 Bb13

SXS.

CMA7 Bb7(b9) A7 Ab7 G+7 G7 C A+7(b9) D9 D9 G+7(b9)

SXS.

f

B

CMA7 CHo Dmi7 G9 CMA7 C13 C+7 FMA9 Bb13

SXS.

ENS.

Musical notation system 1. Chords: CMA7, Bb7(b9), A7, Ab7, G+7, G7, C, Dmi7, D#0, C6(9)/E, Emi7(b9). Performance markings: SXS., ENS., SXS.

Musical notation system 2 (Section C). Chords: Emi7(b9), A+7(b9), Dmi, Dmi(ma7), Dmi7, Dmi6, Bb9, G7(b9), Cma9. Performance markings: mf.

Musical notation system 3. Chords: Emi7(b9), A7(b9), Dmi7, Dmi6, Bb9, A9, Ab+7G13. Performance markings: SXS.

Musical notation system 4 (Section D). Chords: CMA7, Emi7(b9), A7, Dmi7, Dmi(ma7), Dmi7, G7, CMA7, C7, Fma9, Bb13. Performance markings: mp, SXS, f.

TO CODA

Musical notation system 5. Chords: C7, Bb7(b9), A7, Ab7, G7, C6(9), F9, Emi7(b9). Performance markings: Solo FILL, SXS, ENS., mf.

E

Emi7(b9) A7(b9) Dmi7 Dmi6 Bb9 Cma7 Emi7(b9)

SXS. ENS. >

Emi7(b9) A7(b9) Dmi6 A7(b9) Dmi6 Bb9 A9 Ab+7 G13

SXS. > BR. TRPTS.

F

C C#0 Dmi7 G9 Db13 C13 Cb13 Bb13

SXS. mf

Emi7 A7 Ebmi7 Ab7 G+7 Eb7 Admi7 G+7

SOLO ENS. VOCAL D.S. al Coda

mf

Coda

C C9 Gb7(m9) Bb13 Cma7 Eb(b9) A7 Ab7 G+7 C13(b9)

ENS. TRPTS. SXS. BASS TRB.