

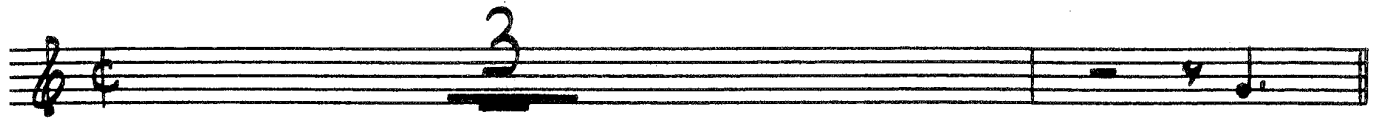
BLUE MOON

[Vocal Feature]

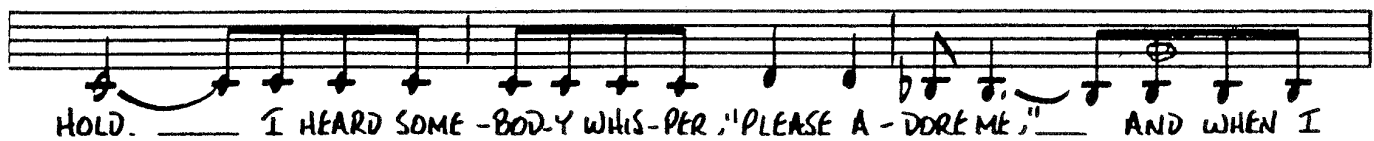
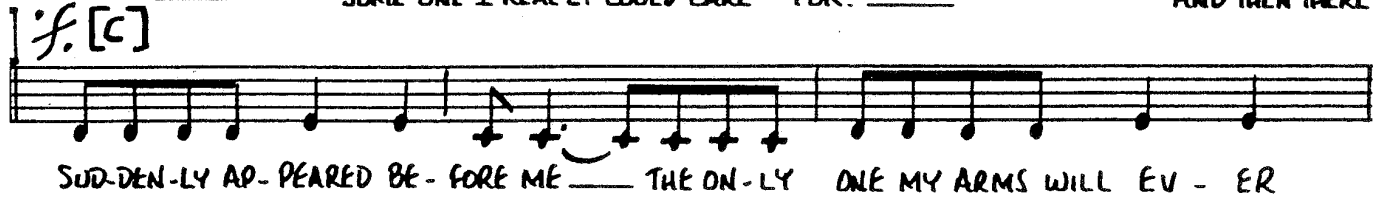
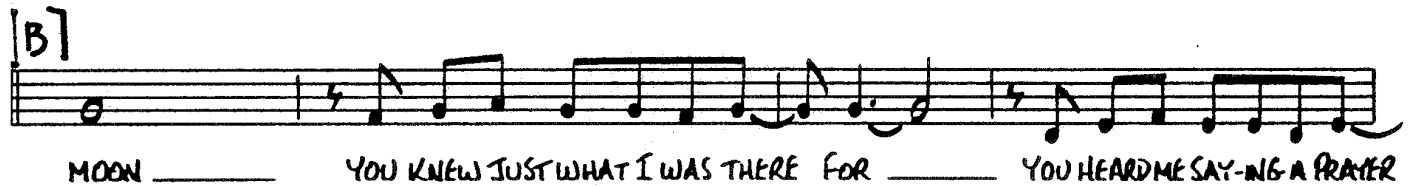
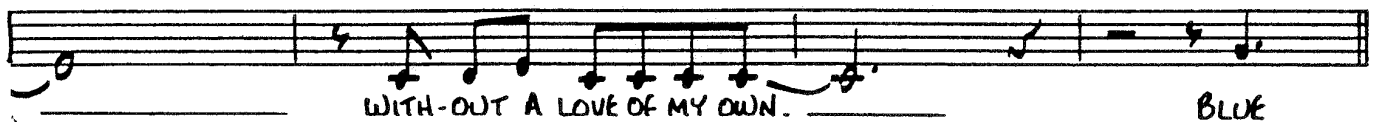
VOCAL

EASY SWING (♩=112)

By LORENZ HART and RICHARD RODGERS
Arranged by DAVE WOLPE



BLUE



"BLUE MOON"

2-

VOCAL

TO CODA ⊕

(LONE) WITH-OUT A DREAM IN MY HEART WITH-OUT A LOVE OF MY OWN

AND THEN THERE
D.S. AL CODA

⊕ CODA

SOFTER

(OWN) WITH-OUT A LOVE OF MY OWN

BLUE MOON

[Vocal Feature]

PIANO

EASY SWING (♩ = 112)

By LORENZ HART and RICHARD RODGERS
Arranged by DAVE WOLPE

Handwritten chord annotations: C6(9) Am7 Dmi7 G13 C6(9) Am7 Dmi7 G13 (VOCAL CUE)

A

Handwritten chord annotations: C Am7 Dmi7 G7 CMA7 Am7 Dmi7 G7

Handwritten chord annotations: Bb13 A9 D9 Dmi7/G C Am7 Dmi7 G13 Db9(b5)

B

Handwritten chord annotations: C6(9) Am7 Dmi7 G7 CMA7 Am7 Dmi7 G13

"BLUE MOON"

PIANO

Musical notation for the first system, measures 1-4. The key signature has two flats (Bb and Eb). The time signature is 4/4. The notation includes a treble clef and a bass clef. Chords are written below the notes: Bb13, A9, D9, Dmi7/G, C, Bb13, and CMA9(b). A fermata is placed over the final note of the first staff.

C *f.*

Musical notation for the second system, measures 5-8. The key signature has two flats. The notation includes a treble clef and a bass clef. Chords are written below the notes: Dmi7, G13, C6(a), Ami7, Dmi7, G13(b9), and C6(a). Dynamics markings *mp* and *mf* are present. A fermata is placed over the final note of the first staff.

Musical notation for the third system, measures 9-12. The key signature has two flats. The notation includes a treble clef and a bass clef. Chords are written below the notes: Fmi7, Bb13(b9), Eb6(a), G/b, D7, Dmi7/G, and G+7. A fermata is placed over the final note of the first staff.

D

Musical notation for the fourth system, measures 13-16. The key signature has two flats. The notation includes a treble clef and a bass clef. Chords are written below the notes: CMA9, Ami7, Dmi7, G7, Emi7, Ami7, Dmi7, and G7. A fermata is placed over the final note of the first staff.

TO CODA ⊕

Musical notation for the fifth system, measures 17-20. The key signature has two flats. The notation includes a treble clef and a bass clef. Chords are written below the notes: Bb13, A9, D9, Dmi7/G, C, Ami7, Dmi7, and G13. A fermata is placed over the final note of the first staff.

"BLUE MOON"

. 3 -

PIANO

E CMA9 Emi7 Dmi7 Emi7/G Dmi7/G CMA9 Ami7 Dmi7 G13 G7 bb9(b5) A9 D9 Dmi7/G

LIGHT FILL (FILL) (FILL)

C Ami7 Dmi7 G+7 F CMA9 Emi7 Dmi7 Emi7/G Dmi7/G CMA9 CMA9Ami7 Dmi7 G13 G7 bb9(b5)

(FILL) (FILL) (FILL)

bb9(b5) A9 D9 Dmi7/G C C bb13 CMA9 (VOCAL)

(FILL)

D.S. AL CODA

⊕ CODA

Cb(9) Ami7 Dmi7 Dmi7/G Cb(9) Ami7 Dmi7 G13 CMA9(FILL)

mf mf